

EVENT SEASON ESSENTIAL

POST COPY

Frown lines aren't on the guest list. 🚫

Between the seating chart and the dress fittings, you have enough to manage. DAXXIFY® is the only peptide-formulated treatment that works fast to deliver a smooth, radiant look*, giving you one less thing to worry about on the big day. ❤️



Contact us to schedule your DAXXIFY® treatment today!

*In clinical trial diaries, patients reported seeing a measurable improvement within 2 days. 74% achieved a ≥ 2-grade improvement at week 4 per both physician's and patient's assessment. More than 50% had no or minor frown lines until 6 months after treatment per both physician's and patient's assessments. Improves the appearance of skin texture versus before treatment. In an open label study (N=27), 89% of patients agreed their skin looked radiant/bright (exploratory endpoint).

#DAXXIFY #FrownLineTreatment #Aesthetics #Injectibles

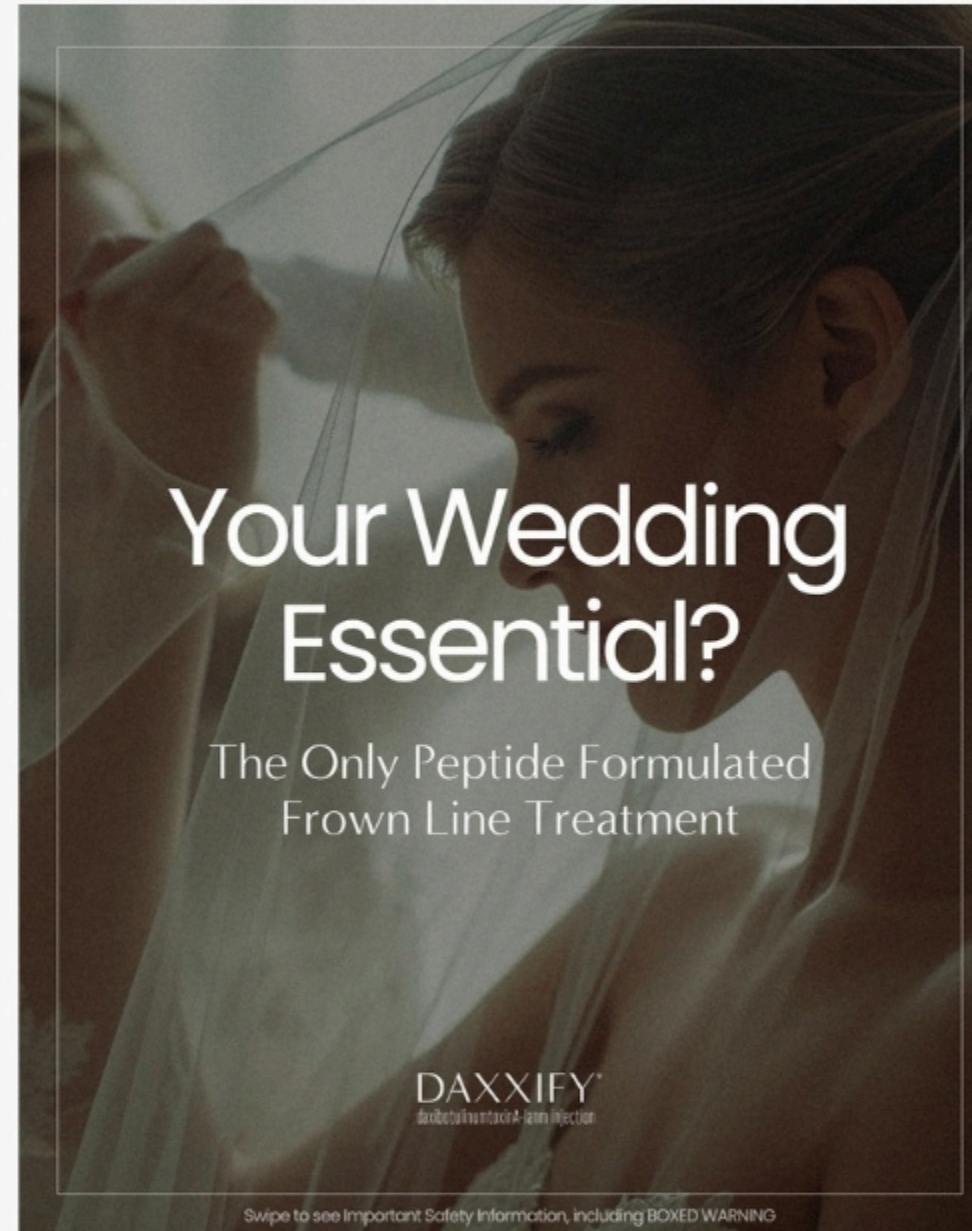
For DAXXIFY® Full Prescribing Information including Boxed Warning and Medication Guide, see @daxxifypi.

DAXXIFY® (daxibotulinumtoxinA-lanm) for injection is a prescription medicine for adults to temporarily improve the look of moderate to severe frown lines between the eyebrows. Ask your doctor to tell you about DAXXIFY®. DAXXIFY® may cause serious side effects hours to weeks after injection. Alert your doctor right away as difficulty swallowing, speaking, breathing, eye problems or muscle weakness can be a sign of a life-threatening condition. The most common side effects are headache, eyelid drooping, and loss of the ability to move some muscles in your face.

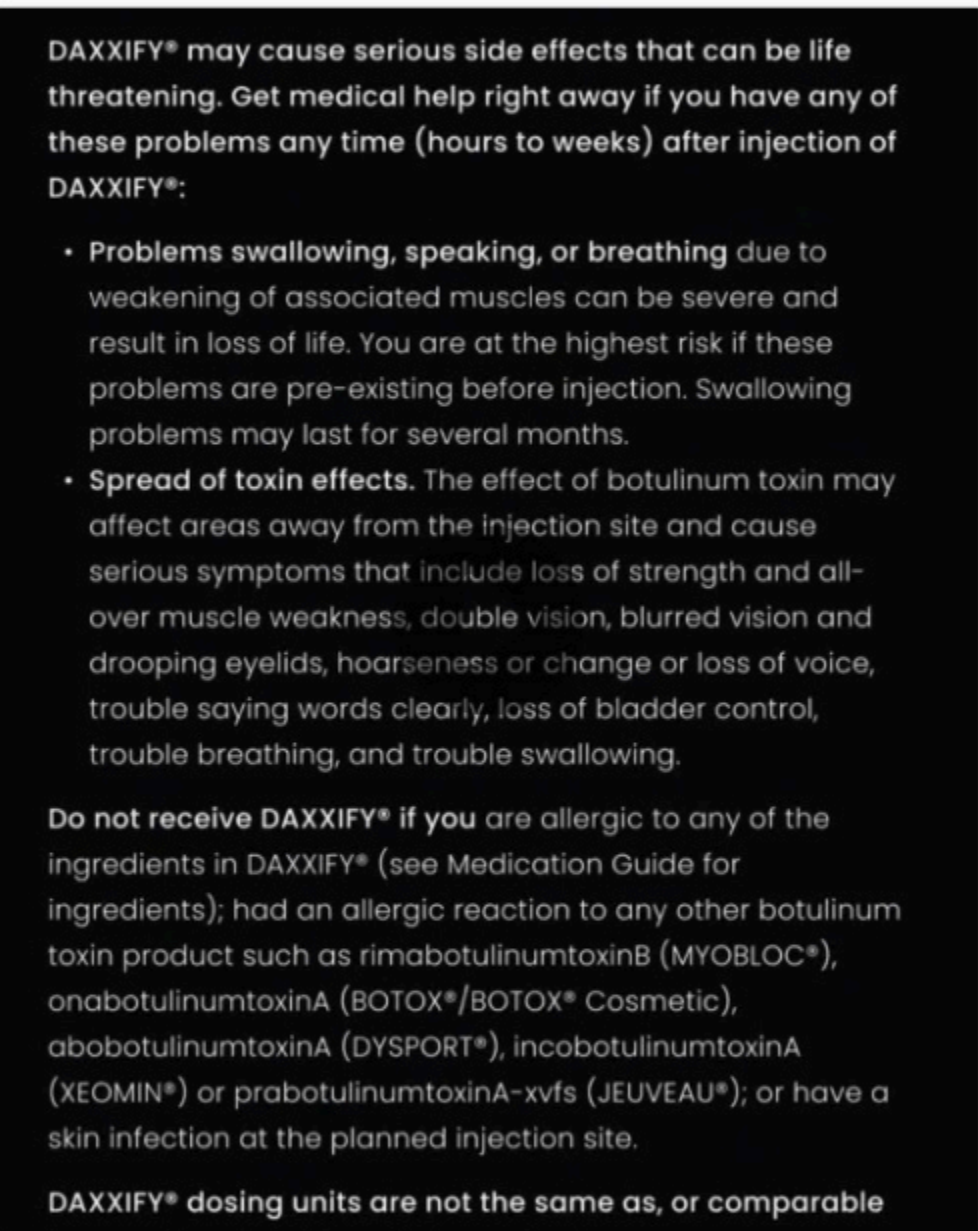
Call your doctor for medical advice about side effects. Intended for US audiences.

DAXI-01773

OPTION 3 – STATIC POST



SLIDE 1



SLIDE 2 SCROLLING ISI

DAXXIFY® may cause serious side effects that can be life threatening. Get medical help right away if you have any of these problems any time (hours to weeks) after injection of DAXXIFY®:

- Problems swallowing, speaking, or breathing due to weakening of associated muscles can be severe and result in loss of life. You are at the highest risk if these problems are pre-existing before injection. Swallowing problems may last for several months.
- Spread of toxin effects. The effect of botulinum toxin may affect areas away from the injection site and cause serious symptoms that include loss of strength and all-over muscle weakness, double vision, blurred vision and drooping eyelids, hoarseness or change or loss of voice, trouble saying words clearly, loss of bladder control, trouble breathing, and trouble swallowing.

Do not receive DAXXIFY® if you are allergic to any of the ingredients in DAXXIFY® (see Medication Guide for ingredients); had an allergic reaction to any other botulinum toxin product such as rimabotulinumtoxinB (MYOBLOC®), onabotulinumtoxinA (BOTOX®/BOTOX® Cosmetic), abobotulinumtoxinA (DYSPORT®), incobotulinumtoxinA (XEOMIN®) or prabotulinumtoxinA-xvfs (JEUVEAU®); or have a skin infection at the planned injection site.

DAXXIFY® dosing units are not the same as, or comparable